

Chapter 22: Point Features

Contents

22.0 Point Features	2
22.1 Create Point Features	2
22.1.1 Water Features – Type	4
22.1.2 Veteran Trees	5
22.1.2.1 Veteran Tree Form	6
22.1.3 Hazard	8

Tables

Table 22 - 1: Point Features Data Fields	3
Table 22 - 2: Theme Data Fields - Point Features.....	3
Table 22 - 3: Water Features Data Fields.....	4
Table 22 - 4: Veteran Trees: Species vs. DBH	5
Table 22 - 5: Veteran Trees Data Fields	5
Table 22 - 6: Veteran Tree Features Data Fields	7
Table 22 - 7: Veteran Tree Attributes Data Fields	7
Table 22 - 8: Hazards Data Fields.....	8

Figures

Figure 22 - 1: Maiden Tree	6
Figure 22 - 2: Multi-stemmed.	6
Figure 22 - 3: Coppice	6
Figure 22 - 4: Pollard	6
Figure 22 - 5: Layering	6

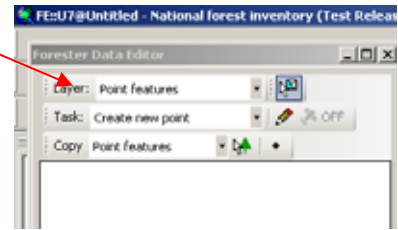
NFI Survey Manual Section 22: Point Features

22.0 Point Features

Point features are created when an area, or item it represents, is too small to map. In the NFI this is $<0.01\text{ha}$. Only certain items can be recorded as points e.g. veteran trees, mineshafts...

22.1 Create Point Features

In the Data Editor choose Point Features from the Layer drop down menu and then Create new point from the Task menu.

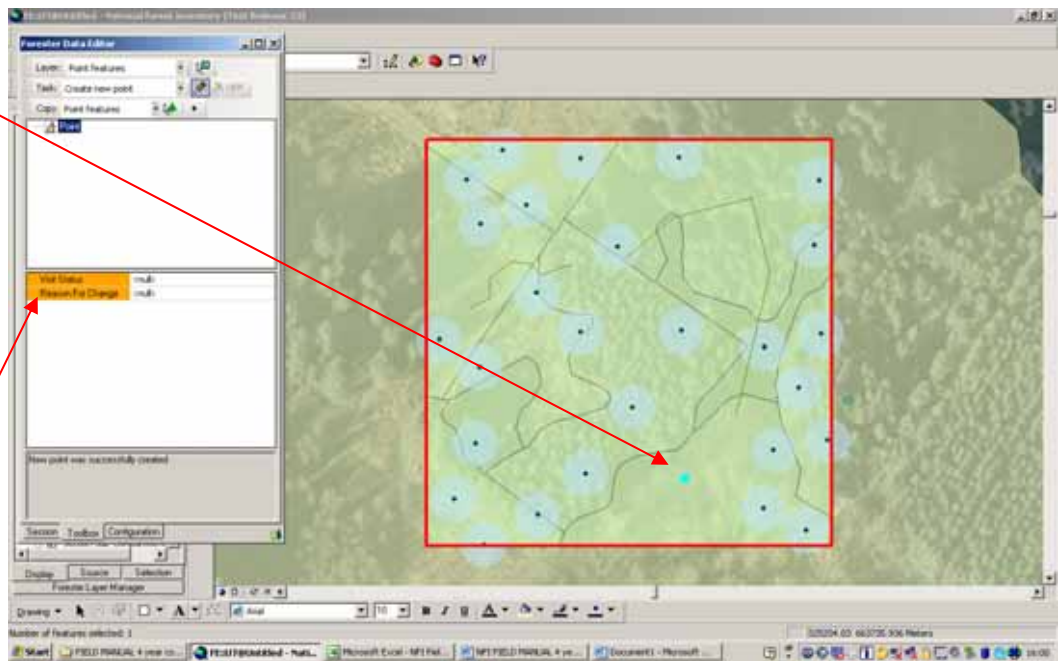


Select the

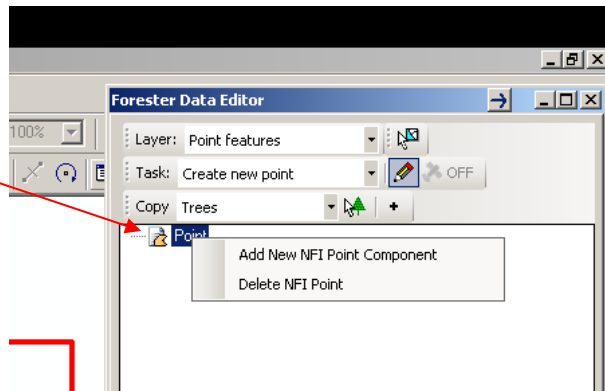


button and click on the screen to highlight the location of the Point.

Within the Data Editor box, Data Fields will appear. Fill these out in the normal manner (see table below).



Right click on Point to Add or Delete a Point Component:



NFI Survey Manual Section 22: Point Features

Table 22 - 1: Point Features Data Fields

Visit Status	<ul style="list-style-type: none"> • Unvisited • In progress • Completed • Refused Access • Not possible to assess 	In progress can be used if surveyor needs to leave the site before completing data entry (e.g. it gets dark before completion)
Reason for Change	<ul style="list-style-type: none"> • No change • Real change • Error change • Spatial error • 1st Assessment • Original 	<ul style="list-style-type: none"> • For use in the 2nd NFI • For use in the 2nd NFI • A change in the data due to an error found by IFOS • As above but a Spatial error • The normal Reason – the 1st assessment of the site • Unchanged data from IFOS

When Adding a new Component the Theme of the Point field must be completed:

Table 22 - 2: Theme Data Fields - Point Features

Field Name	Value
Theme	<ul style="list-style-type: none"> ▪ Water Feature ▪ Veteran Trees ▪ Hazard

NFI Survey Manual Section 22: Point Features

22.1.1 Water Features – Type

Table 22 - 3: Water Features Data Fields

Type	Additional Data required	Data entry
<ul style="list-style-type: none"> ▪ Pond 	<ul style="list-style-type: none"> ▪ Pond Area (sq metres) 	Estimate of area – Free text
	<ul style="list-style-type: none"> ▪ Water Feat. Depth 	Choose from: <ul style="list-style-type: none"> ▪ 0-1m ▪ 1-2m ▪ 2-3m ▪ 3-4m ▪ 4-5m ▪ 5+m ▪ Dry
	<ul style="list-style-type: none"> ▪ Tree Shading % 	Estimate % of pond overshadowed by trees from a plan view (i.e. from above)
	<ul style="list-style-type: none"> ▪ Contaminants 	<ul style="list-style-type: none"> ▪ None ▪ Woody harvesting & fallen tree debris ▪ No list A, possibly min. list B litter (see Table 21-9) ▪ Traces of list A and/or occasional List B ▪ List A widespread &/or occasional or widespread List B
	<ul style="list-style-type: none"> ▪ Outflow 	Is there an outflow visible? <ul style="list-style-type: none"> ▪ Yes ▪ No
	<ul style="list-style-type: none"> ▪ Inflow 	Is there an Inflow visible? <ul style="list-style-type: none"> ▪ Yes ▪ No
	<ul style="list-style-type: none"> ▪ Pond Origin 	<ul style="list-style-type: none"> ▪ Natural ▪ Man made
	<ul style="list-style-type: none"> ▪ Pond Age 	<ul style="list-style-type: none"> ▪ <10 years ▪ >10 years (10 years or greater)
<ul style="list-style-type: none"> ▪ Spring 	None	

NFI Survey Manual Section 22: Point Features

22.1.2 Veteran Trees

Veteran trees are defined by either DBH for a given species, and/or a total of three or more features *and* attributes combined:

Table 22 - 4: Veteran Trees: Species vs. DBH

Species	DBH	Species	DBH
Alder	100cm +	Other Exotics	150cm +
Ash	100cm +	Other pine	150cm +
Beech	150cm +	Other small tree species	75cm +
Birch	75cm +	Poplar	150cm +
Cherry	75cm +	Rowan	75cm +
Elm	150cm +	Scot's pine	100cm +
Field Maple	75cm +	Sweet Chestnut	150cm +
Holly	75cm +	Sycamore	150cm +
Hornbeam	75cm +	Willow - Goat	75cm +
Horse Chestnut	150cm +	Willow - Grey	75cm +
Lime	150cm +	Willow - other	150cm +
Oak (lowland)	150cm +	Yew	75cm +
Oak (upland)	100cm +		

Table 22 - 5: Veteran Trees Data Fields

Field Name	Value	Comments
Species	See Species list above	
DBH	Free text – whole number	
Height(m)	Free text – total height to one decimal place	
Tree Form	<ul style="list-style-type: none"> ▪ Maiden Form ▪ Multi-stemmed ▪ Coppice ▪ Pollard ▪ Layering 	See figures overleaf
Heritage Tree	<ul style="list-style-type: none"> ▪ <null> ▪ Yes 	

NFI Survey Manual Section 22: Point Features

22.1.2.1 Veteran Tree Form

Diagrams from Fay, N. & de Berker, N. (1997) The Specialist Survey Method,
http://www.treeworks.co.uk/press_releases_publications.php
[p](#).

Figure 22 - 1: Maiden Tree

Free grown with natural crown

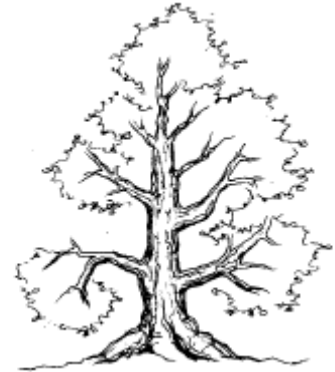


Figure 22 - 2: Multi-stemmed.

Trunk naturally crowned with multiple stems.



Figure 22 - 3: Coppice

Cutting of stems creating a multi-stem tree, cutting carried out near the ground



Figure 22 - 4: Pollard

Similar to coppice but stems start much higher from the ground (e.g. to prevent grazing of new stems)



Figure 22 - 5: Layering

Tree with main stem on the ground and new stems arising from it.



NFI Survey Manual Section 22: Point Features

Left click on the Component to bring up the Veteran Tree Features and Veteran tree Attributes data entry fields.

Right click on Veteran Tree Features to **note** the presence of any of the following features. More than 1 feature can be noted by Right clicking on Veteran Tree Features as usual.

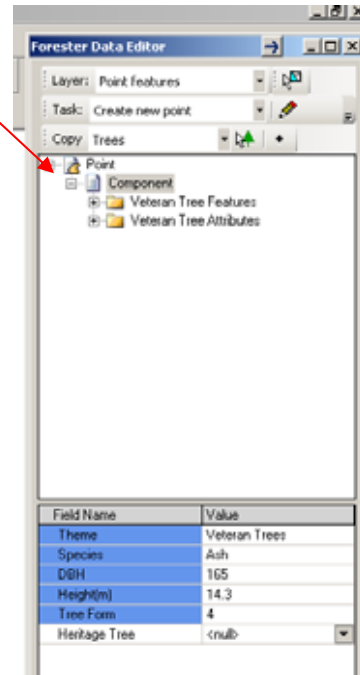


Table 22 - 6: Veteran Tree Features Data Fields

Field Name	Value
Feature	Foliose lichens
	Bryophytes
	Ferns
	Mistletoe
	Vascular plants
	Other trees
	Suckers

Right click on Veteran Tree Attribute to **note** the **presence and number** (free text, whole numbers only) of any of the following features. More than 1 attribute can be noted by Right clicking on Veteran Tree Attribute as usual.

Table 22 - 7: Veteran Tree Attributes Data Fields

Field Name	Value	Comment
Attribute	Rot Holes	Must be ≥ 5 cm diameter
	Rot Sites	Must be $\geq 300\text{cm}^2$
	Dead Wood in Crown	Must be ≥ 1 m in length and ≥ 25 cm circumference
	Hollowing of Trunk/Major Limbs	
	Water pockets	
	Bark Fluxes	Liquid from inside the tree leaking through the bark. Fluxes may emerge from wounds, cracks or fissures without obvious signs of decay.
	Tears, Scars or Lightning Strikes	
	Bird Nests	Use 1 to denote presence, do not count them all.
	Woodpecker Holes	As for Birds Nests
	Bat Roosts	As for Birds Nests
	Other Animal Activity	As for Birds Nests

NFI Survey Manual Section 22: Point Features

22.1.3 Hazard

Hazards (or Access Points) must be identified as Point features.

Table 22 - 8: Hazards Data Fields

Field Name	Value	
Hazard	<ul style="list-style-type: none">▪ Mine Shaft▪ Sink Hole▪ Access point▪ Bridge▪ Recreation Site▪ Mast/Aerial/Windfarm▪ Harvesting Operations▪ Snares▪ Hunting▪ Other Hazard	If 'Other Hazard' is chosen a Comments box will appear which must be filled in.